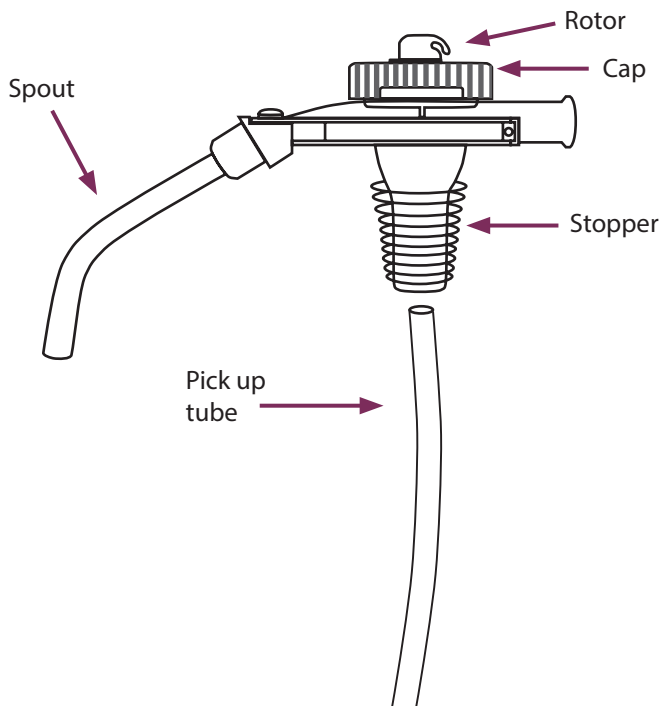


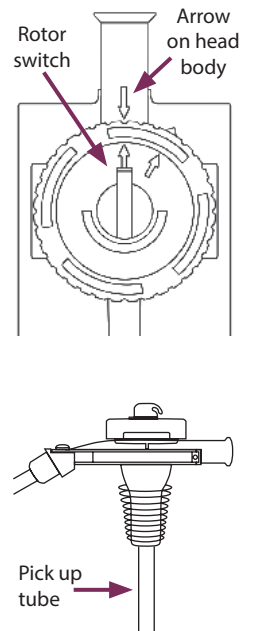
CLEAN-POUR DISPENSING HEAD ANATOMY



1 ATTACHING THE PICK UP TUBE

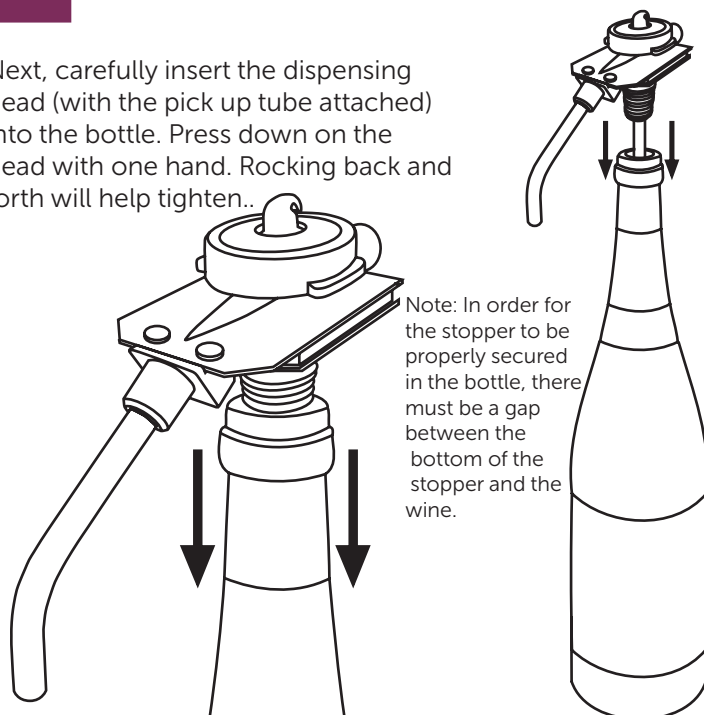
Assure that the gasket is in good condition, the cap is properly mounted, and the rotor switch is in the correct position, with arrows at 12 and 1 o'clock.

Insert a clean pick up tube into the bottle (it is normal for the upper end of the tube to extend beyond the tip of the bottle at this point). Insert the upper end of the pick up tube firmly into the opening on the bottom of the head, as shown in the Clean-Pour Dispensing head anatomy diagram. The tube will wrap around the inside of the bottle to allow for complete depletion of the liquid from the bottle.



2 INSTALL HEAD ONTO BOTTLE

Next, carefully insert the dispensing head (with the pick up tube attached) into the bottle. Press down on the head with one hand. Rocking back and forth will help tighten...

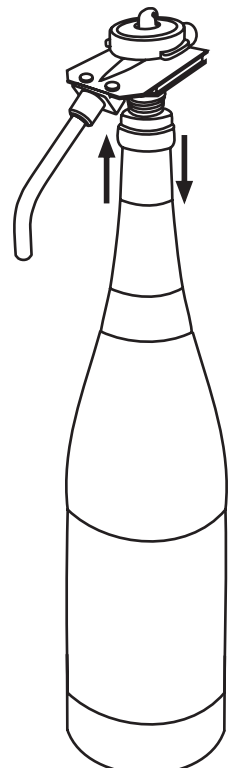


3 CHECK & SECURE

Verify the Clean-Pour head is secure by lifting the bottle 1-2" in the air, holding it only by the head to check if it holds the bottle properly.

If the head becomes loose, remove from bottle, wipe the head and the inner bottleneck dry, remove the cap from the head body, push the head with stopper into the bottle and then tighten the cap back onto the head body.

If the stopper is not going in far enough into the bottle, moisten the stopper and press it back in tightly. If the stopper is going in all of the way but not staying in, wipe the moisture from inside of the bottle and press it back in tightly.

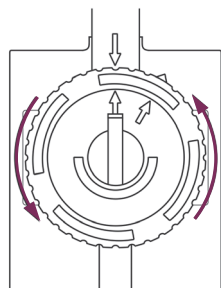


CLEANING & CARE

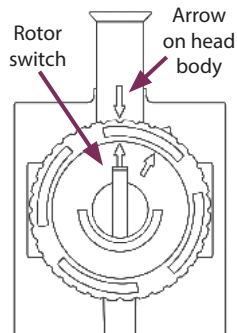
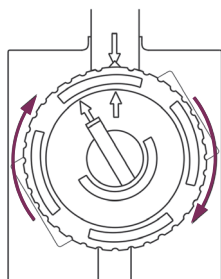
To assure your WineStation operates at the highest level of efficiency, you should clean the Clean-Pour Dispensing heads regularly.

- The Clean-Pour Dispensing head requires no more than either a warm water rinse or a run through a dishwasher.
- First, remove the pick up tube. Then, remove the cap from the head body by turning the cap counter clockwise. The cap will pop off.
- Place all three pieces in the dishwasher (do not use sanitizer) or rinse with warm water.
- Before replacing the cap, spray a small amount of silicone spray beneath the cap (see manual).
- To secure the cap, re-position the cap on the head, with the triangular pointer on the side of the cap pointing towards the arrow on the head body as shown. Push the cap down and turn it clockwise. Line up the rotor switch (at the center of the cap) with the arrow on the head body.

Removing the Cap:



Repositioning the Cap:



CLEANING & CARE

- The stopper can easily be removed from the dispensing head by simply twisting clockwise. The stopper is dishwasher safe.
- The new patented stopper will also fit onto any Clean-Pour Dispensing head.

ONLINE CUSTOMER TUTORIAL VIDEOS

To view the online customer tutorial videos and to download the operating manual, visit:

www.napatechnology.com/selfhelp/

Simply create an account and log in. Once your account is created, you will have unlimited access to the tutorial videos and self-help guides.

For further assistance, contact Napa Technology Customer Support by calling 1.800.603.6550 or emailing support@napatechnology.com

